

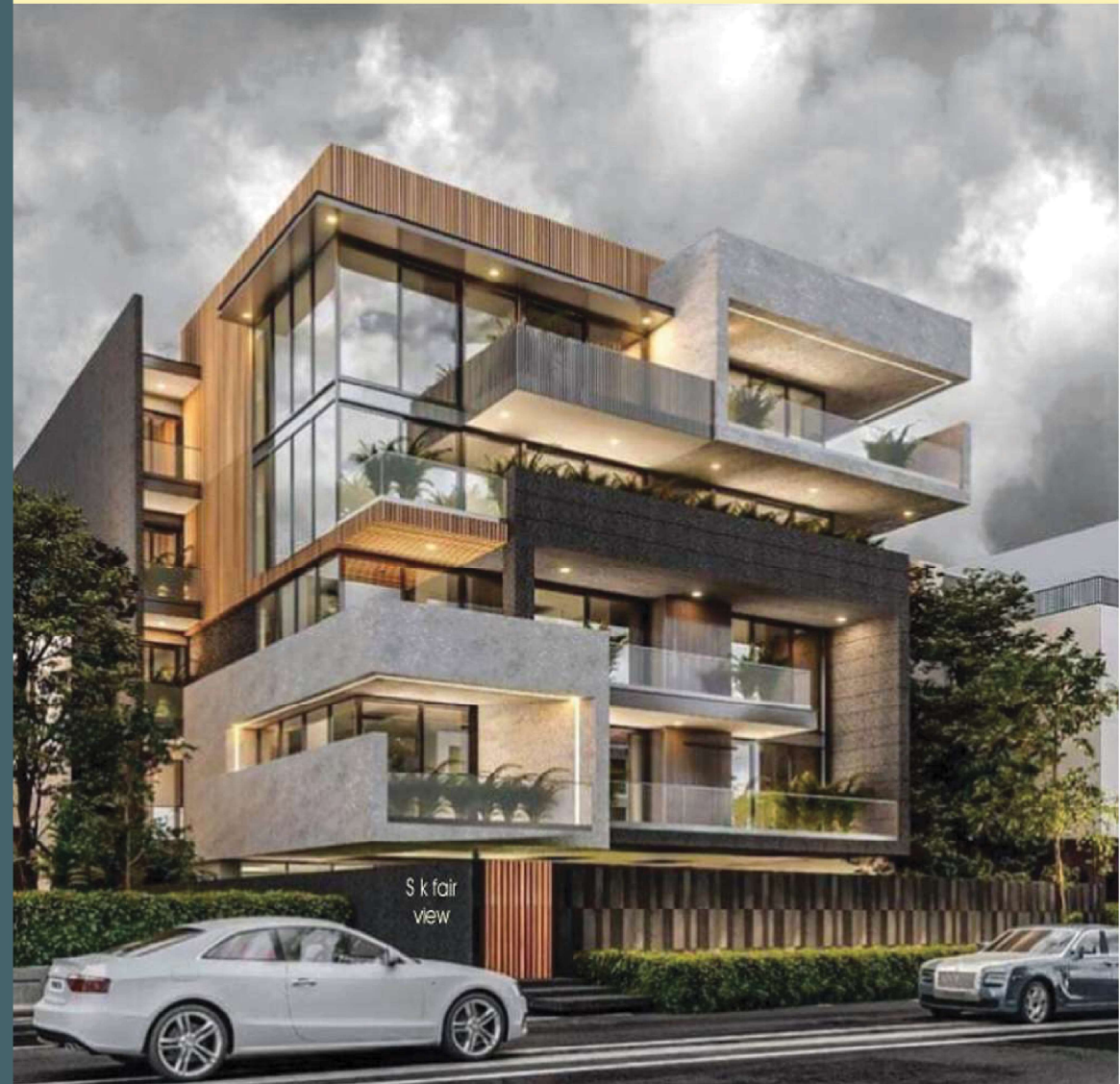


S.K.FAIR VIEW
KAVARI HILLS



S.K.FAIR VIEW

YOUR LAND
YOUR VILLA !





INVEST IN A HOME
TODAY TO SECURE
YOUR FUTURE



THE FINEST DESIGN, THE BEST LOCATION
AND THE MOST LUXURIOUS LIFESTYLE



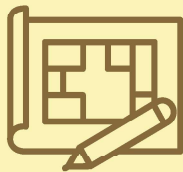
684 Sq. Yd Land



3 Floors Bespoke
Bungalow



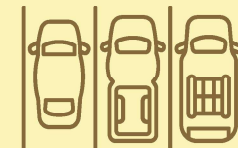
10 various
Amenities



6 BHK



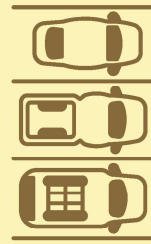
Location :
Kaveri Hills, Hyderabad



Ground for
Parking

LUXURY RESIDENCES
WITH A TOUCH OF
CLASS AND ELEGANCE





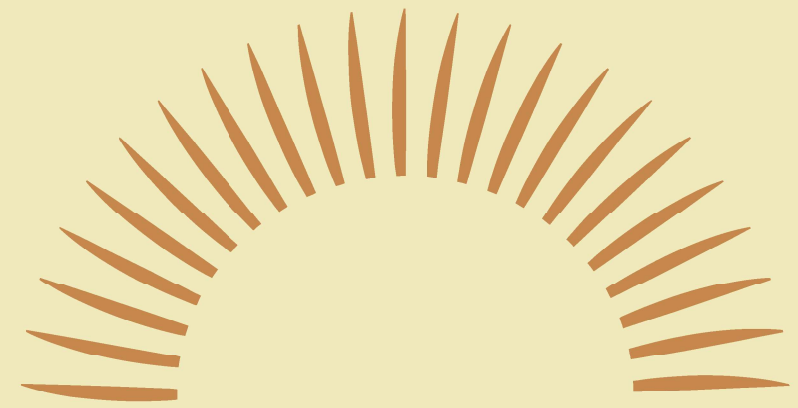
PARK WITH EASE

we have ample parking facilities for each member. You can park car with ease



GRANDEUR WITH A PERSONAL TOUCH





**LUXURY LIVING
SPACES THAT WILL
LEAVE YOU AWESTRUCK**



RELAX IN BEAUTIFUL
S.K.FAIR VIEW





**LIVE THE LUXURIOUS
LIFE YOU DESERVE**



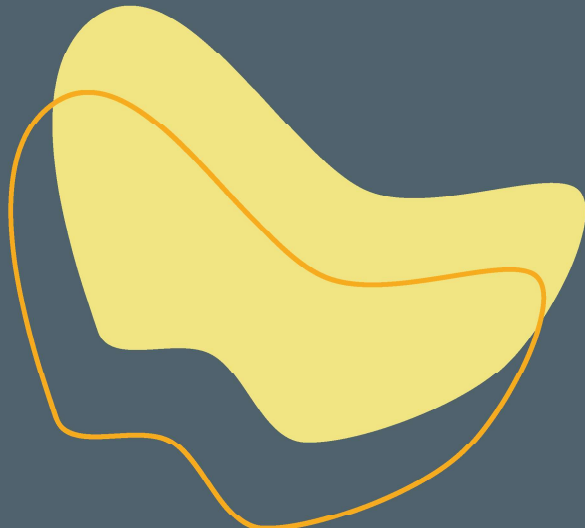
GET IN SHAPE AT OUR
STATE-OF-THE-ART GYM



.....
**ENJOY THE NICE VIEW
FROM YOUR OWN
PRIVATE TERRACE**
.....



GET A PERFECT
COMBINATION OF
LUXURIOUS
HOMES AND
AMENITIES



**WE HAVE A PLACE FOR ALL
YOUR LITTLE ONES TO PLAY**

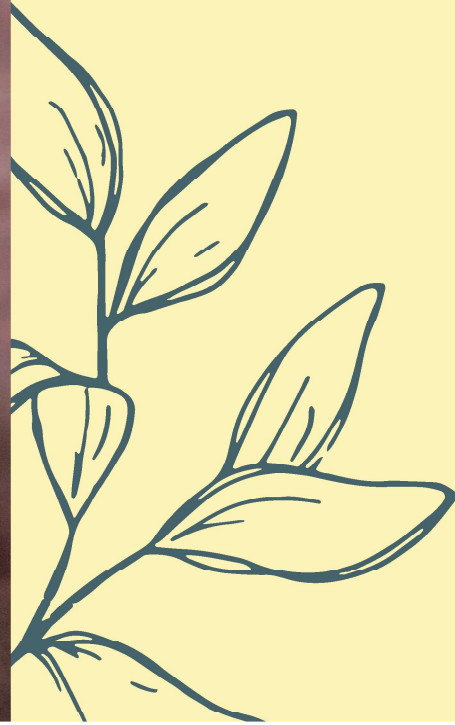


A QUITE AND PEACEFUL
ENVIRONMENT PERFECT
FOR READING BOOKS






**STEP OUT FOR
THE BEST PLACE TO SEEK
TRANQUILITY**






**RELAX. RECHARGE AND
RE-DISCOVER YOURSELF.**





your living spaces
are generously
planned to set
you free after a
hard day's work
so that you can
cherish the warm
moments with
your loved ones.

A photograph of a swimming pool with a white coping and a blue tile border. A stainless steel ladder is visible on the left side. The pool water is clear and blue. The background consists of a well-maintained green lawn and a dense line of trees. The image is split vertically into two halves, with the left half having a semi-transparent green overlay.

**Experience warmth, joy
and laughter in the
serene environment**









SPECIFICATIONS



STRUCTURE : Earthquake Resistant Foundation with RCC framed structure to withstand wind & seismic loads.

SUPER STRUCTURE : "Red Bricks for external walls and 4" thick red bricks for internal walls of Top Quality & Malze or Cement Bricks."

PLASTERING : **INTERNAL WALLS** : 12MM coat cement plaster with smooth finishing by sand and Ultratech or Birla Cement or equivalent with Bida Putty or equivalent finish.

SHUTTER FOR RETAIL (G+1 : Motorized perforated shutter for all units of repute make with 12-15mm toughened spider glazing glass walls and designer hardware of reputed make.

INTERNAL DOORS FOR COMMERCIAL (3RD to 9TH) : Indian BT or African Teak wood frame with signer flush shutter with two sides green ply veneer with melamine polishing and reputed hardware fitting powder coated aluminum Shutter.

"JOINERY DOOR WORKS : **TOILET DOORS** : Indian BT or African Teak wood frame and water proof fire rated WPC Shutter with green ply veneer or equivalent, fitted with reputed hardware."

WINDOWS : 2.5 track UPVC window systems of Fenesta or LG or equivalent with 5 mm glass.

GRILLS: Aesthetically designed bright steel grills with Asian enamel paint finish or equivalent.

PAINTING : **INTERNAL (Walls)** : 2 coats of 2 MM each water proof Birla Wall care putty finish with 2 coat of Acrylic emulsion Asian paint over a coat of primer.

Acrylic emulsion Asian Paint for all service areas. Designer Gypsum board False ceiling covering the wiring of sound Speaker, LED Lights (Havella, Luker, Casa or Syska) HVAC ducting, Smoke detector, Water Sprinkler in the entire common area.

EXTERNAL : High Performance structural double Glazing facade with combination of Italian Marble Facades, stone cladding, 3 mm tiles, 8 mm thick refractive glass,"

ACP cladding and Texture paint finish over 2 coat of Ultima exterior emulsion paint on all the three sides. Front full and other sides half. (As per design)

- FLOORING** : **COMMON AREA:** Italian Marble flooring or high quality granite.
- TOILETS** : Anti-skid and acid resistant tiles of luxury look of Kajaria / somany or RAK make.
- "STAIRCASE / CORRIDOR** : Aesthetical Combination of granite, stone and vitrified tiles as per architectural design.
- PARKING** : "Parking in the cellar and driveway with VDF floor ing and cobbles Stones 4"" by 4". Rampa & Ground floor with Combination of Parking Tiles, Tandoor stones blocks and Interlocking pavement blocks."(Ultra Company Make Parking Tiles or reputed make.)
- DADOING** : **STAIRCASE:** Granite dedo up to 4' feet height (G+2 floors)
- "TOILETS** : Rough Granite/Glazed/Matt Ceramic tile 2'X1' of Kajaria, Somany or RAK make up to Ceiling height"
- C.R FITTINGS & SANITARY FITTINGS** : All sanitary fixtures of superior TOTO or Kohler or equivalent.
Black polished Granite top with counter washbasin & full size mirror.
Wall mounted EWC of TOTO or Kohler with concealed flush tank of Grohe.
Urinals of kohler diverter with shower.
All CP fitting are chrome plated and superior quality of Grohe or Kohler or equivalent make.
- ELECTRICAL** : Concealed copper wiring of Havells or Finolex make and modular switches of Legrand-Myrius make or equivalent make.
Provision of High end A/c's ducting & power outlets for air conditioners.
Exhaust fans in all toilets.
Provision of State of art centrally Air conditioning system (G+2) and common area and separate air handling Units (AhtJ's) for every floor unit with AC ducts extended up to each unit. (Excluding Internal air conditioning inside area of each units) (If converted into Mall).
CT Power supply or each unit with individual meter boards.
(As per electricity distribution department) Miniature Circuit Breaker(MCB) of Legrand or Schneider or equivalent make.



OUR PROJECTS





**S.K.PLATINUM SHOPPING MALL
AT GAGANPAHAD MAIN ROAD, SHAMSHABAD.**



**S.K.SIGNATURE SHOPPING CUM RESIDENTIAL
AT GAGANPAHAD MAIN ROAD,
SHAMSHABAD.**



**S.K.CITY SHOPPING MALL AT
KANDLAKOYA, MEDCHAL**



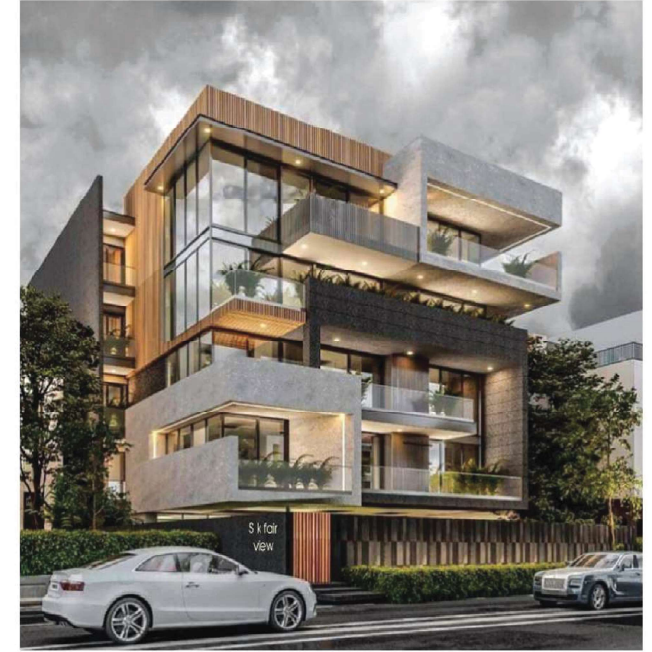
**S.K.TWO AT GAGANPAHAD
MAIN ROAD SHAMSHABAD**



**S.K.LUXURY SKY AT GAGANPAHAD MAIN ROAD,
SHAMSHABAD**



**S.K.HEIGHT AT VIDYA NAGAR,
HYDERABAD**



**S.K.FAIR VIEW AT KAVERI HILL,
HYDERABAD**

**UP COMING PROJECTS AT
GAGANPAHAD MAIN ROAD SHAMSHABAD**

- A BLOCK S K PLATINUM SHOPPING MALL 4 lakh Sft**
- B BLOCK SK SIGNATURE SHOPPING CUM RESIDENTIAL 6 lakh SET .**
- C BLOCK SK GREEN RESIDENTIAL APARTMENTS 4 lakh SFT**
- D BLOCK CLUB HOUSE 25000 sft E BLOCK SK GREEN RESIDENTIAL APARTMENTS 3 lakh sft**

COMPLETED PROJECTS

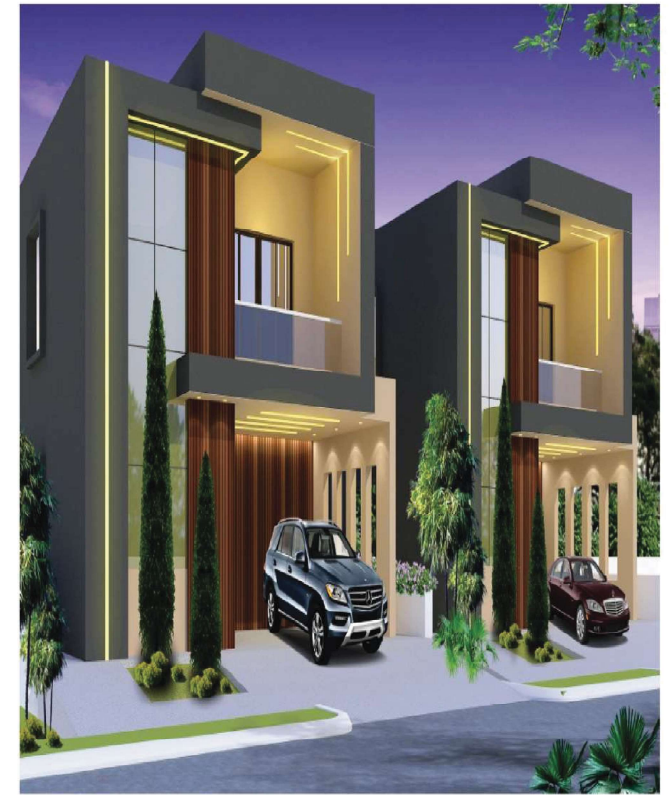
- 1. SK TOWER AT MG ROAD**
- 2. S.K MALL AT VIDYANAGAR**
- 3. SK GRAND RESIDENTIAL AT M.L.A COLONY**
- 4. SK SKYLINE CONDOS AT ALWAL**
- 5. RITESH PRIMER TOWER AT KARKHANA & MANY MORE**



**S.K.GOLDEN PLAZA COMMERCIAL
BUILDING AT NEXT TO RAMOJI
FILMCITY, ABDULLAPURMET**



**S.K.ONE AT GAGANPAHAD,
SHAMSHABAD, HYD**



**S.K.GREEN VALLEY AT NEXT TO
RAMOJI FILM CITY ,
ABDULLAPURMET**

UP COMING PROJECTS AT RAMOJI FILM CITY, ABDULLAPURMET

A 100000 SFT SHOPPING CUM COMMERCIAL

B S K GREEN VALLEY NEXT TO RAMOJI FILM CITY ,8 BUNGALOWS 3000 SFT EACH



SK INFRA PROJECTS

604, 6TH FLOOR, SWAPNALOK COMPLEX, S. D. ROAD,
SECUNDERABAD - 500 003

 +91- 98660 77700  contactus@skinfraprojects.com

 www.skinfraprojects.com